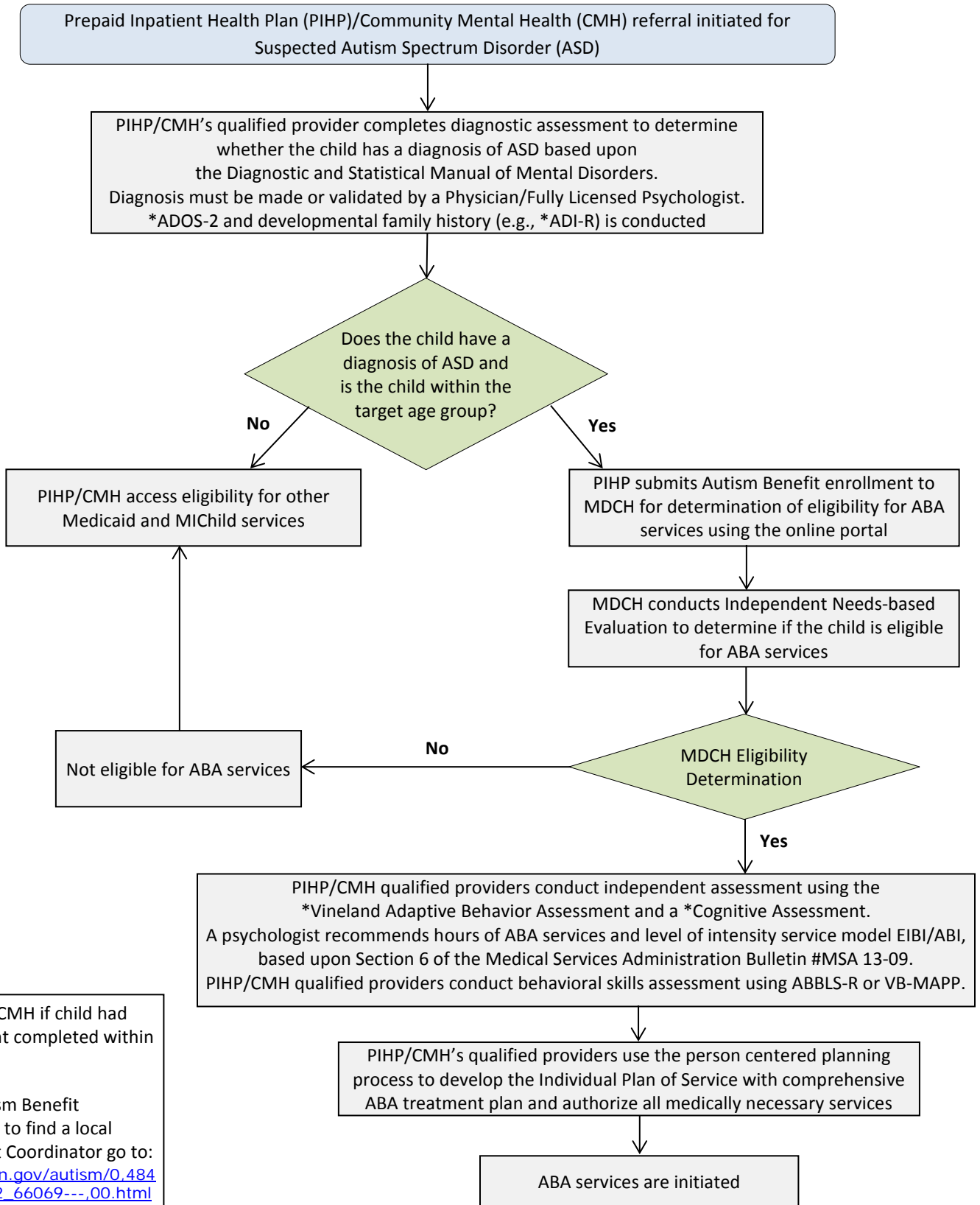




## Initiating Michigan's Medicaid and MICHild Autism Benefit for ABA Services



\* Notify PIHP/CMH if child had this assessment completed within the past year

For more Autism Benefit information or to find a local Autism Benefit Coordinator go to: [http://michigan.gov/autism/0,484,8,7-294-63682\\_66069---,00.html](http://michigan.gov/autism/0,484,8,7-294-63682_66069---,00.html)