

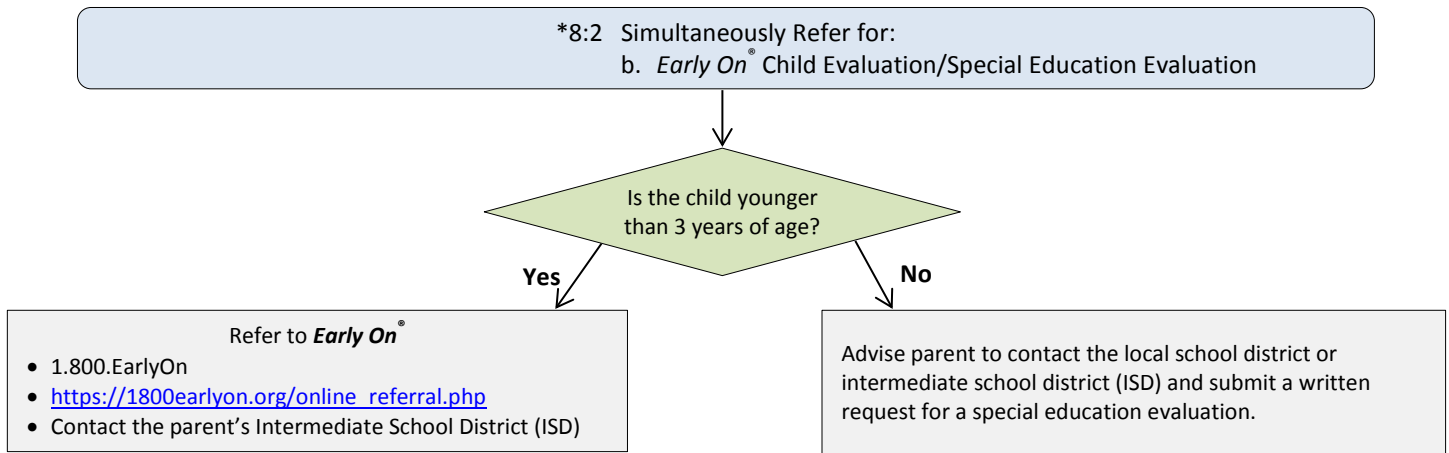
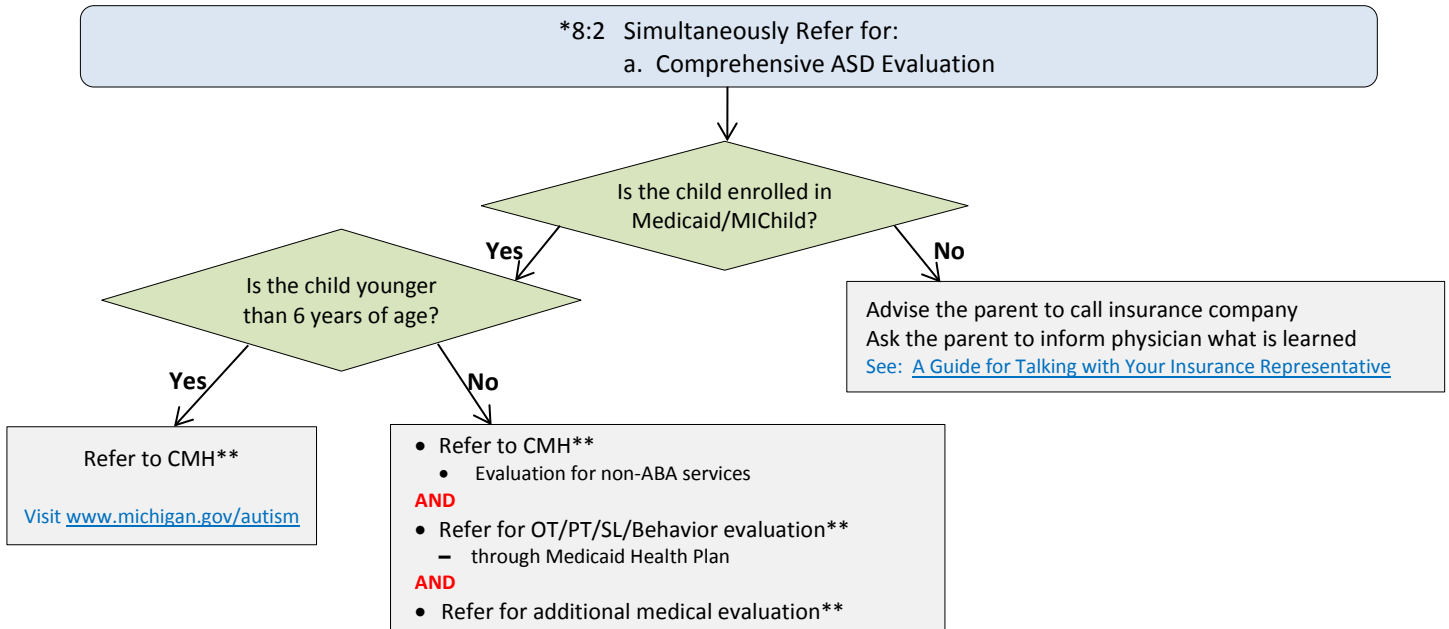
The Michigan Autism Council



Autism Spectrum Disorder: A Guide for the Primary Care Physician based upon the American Academy of Pediatrics Algorithm (2010)*

*6b: Positive Results of Surveillance or Screening for ASD

Note: Simultaneously refer for (a) Comprehensive ASD Evaluation (b) Early On/Special Education Evaluation (c) Audiological Evaluation



***8:2 Simultaneously Refer for:**
c. Audiological Evaluation

Legend

- *American Academy of Pediatrics Algorithm
<http://www.medicalhomeinfo.org/downloads/pdfs/AutismAlarm.pdf>
- Decision Rule
- Possible Action by Physician

****Written Consent to Share Patient Information**

- Request written parent consent to share information with supporting agencies
- File written parent consent to share patient information in patient record and provide copy to supporting agencies